

WASTE & RECYCLING GUIDE



Our Vision

Let's all do our bit to keep waste out of landfill. Recycling right keeps our city clean and green. The long term vision is to see 90% of the waste generated in Wyndham households diverted away from landfill through improved recycling and servicing.



Bin Collection

www.wyndev.com.au/mywyndham

Place your bins out before 6am on the day of collection. To find out your bin collection day visit www.wyndev.com.au/mywyndham, add your address and click on the house symbol. It is important that your recycling and green waste bins are put out on the correct day, as they are collected on alternate weeks.

Once emptied, please collect and return to your home. Note bins will not be collected on Good Friday, Christmas Day, and New Years Day. Scheduled collection for these days will occur the next day.

If you have any questions please call 9742 0777.



Garbage Weekly Service

Remember, everything you place in this bin goes to landfill, so it's important to recycle as much as possible. Please bag your garbage to reduce litter.



0054426

Recycling Fortnightly Service

Ensure items are loose so they can be sorted and recycled at the Recycling Facility. Recycling right allows natural resources to be reused again. Empty item contents, but no need to rinse. No plastic bags.



NO 



Green Waste Fortnightly Service (Optional)

This is an optional service with an annual fee. To arrange for a green waste bin call 9742 0777. Fruit and vegetable scraps are now accepted along with your green waste.



Compost Bins & Worm Farms

www.compostrevolution.com.au/wyndham

Did you know you can cut your garbage in half by recycling your food scraps at home?

Sign up to Wyndham City's Compost Revolution Program to be eligible for 50% discounted compost bins or worm farms. To find out more visit www.compostrevolution.com.au/wyndham

Worm Farms and Compost bins provide an easy way to reduce waste sent to landfill, cutting down on greenhouse gases and returning nutrients back into the soil.



After Collection - Where does it go?

Recycling Bin

Truck delivers recyclables to the SKM Recycling Facility.



The recyclables are sorted into different material types by hand and machinery.



These sorted materials are then reprocessed into new products and packaging.

Green Waste Bin

Truck delivers green waste to the Veolia composting facility in Sunbury.



This organic waste is sorted and then processed into nutrient rich compost.



This compost is used in Council's local parks and gardens, and in farms across the State.

Garbage Bin

Truck delivers garbage to the Werribee landfill, the Refuse Disposal Facility.



This waste is buried underground and does not get to be reused.



Garbage in landfill produces methane gas contributing to climate change. The Refuse Disposal Facility captures some of this gas for energy.

Wyndham City offers all households two free hard and green waste collection services each financial year.

You need to call to book a collection day at least 3 weeks in advance. To book call **9742 0777**.

Hard Waste Collections help to de-clutter our homes, keep our streets clean of illegal dumping and promotes re-use and recycling.



Report Litter

Ph: 9742 0777

What should you do if you see someone litter?

Report littering or illegal dumping, by telling us what was littered, where, when and by whom (car registration or photo if possible).

This maximises Council's chance of being able to fine the offender and helps reduce litter in our local area.



Waste & Recycling Transfer Station

Residents are encouraged to recycle as much of their bulk waste at the Waste & Recycling Transfer Station to avoid it being sent to landfill. All items must be separated and placed into the appropriate bins in order to be recycled. The Transfer Station is located after the weigh bridge at the landfill.

The Refuse Disposal Facility

470 Wests Rd, Werribee
Ph: 9742 0777.

Open: Weekdays: 8am-4pm, Saturdays, Sundays, Public Holidays: 8.30am-4pm

Closed: Christmas Day, New Years Day, Good Friday

FREE DROP-OFF



CHARGES APPLY (\$)



* Shredded green waste is available and can be collected for free.



We encourage you to browse the Re-Sale Shed while at the Transfer Station.
Opening Hours: Mon to Fri 9:30am - 12:30pm, Sat & Sun 10am - 12pm



Rate payers also receive 2 tokens for the Refuse Disposal Facility annually.

Wyndham City has its own Community Recycling Stations for some common household items including: batteries, printer cartridges, CD & DVD's, light globes and mobile phones.



These Recycling Stations are located at various community centres, as well as the Civic Centre. To find your nearest recycling station visit the Wyndham City website and search 'Community Recycling Stations' and click 'Other Recycling Services'. Do not place anything other than the specified item into each of the bins.



Other Recycling Options

Reusable goods - Charity Shop

Drop good quality items off at your nearest charity store during opening hours. Some charities also pick up from your home.

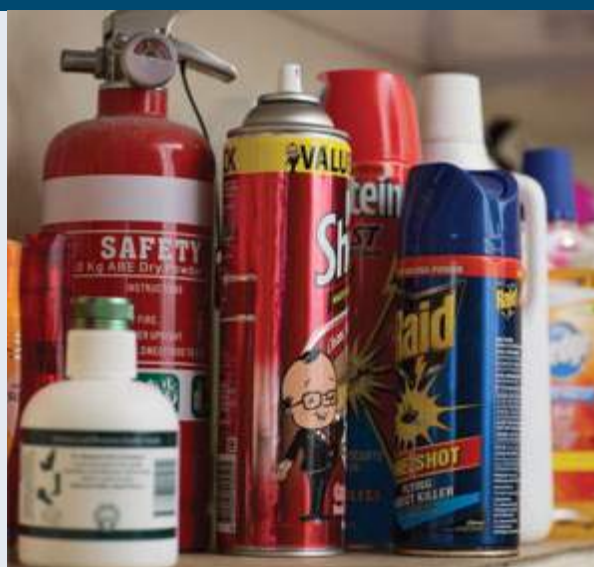
Plastic Bags & Flexible Plastics

Collect your soft plastics and take them to the bin at the front of your local Coles or Woolworths to be recycled.

Household Chemicals

Detox your Home is a free home chemical recycling service that is safe for you and the environment. Take your chemicals to your closest free drop off event.

To find out where, when and how to register, go to www.sustainability.vic.gov.au/detoxmobile or call 1300 363 744.



Reduce Your Waste

The best thing you can do to reduce your waste is to avoid single use plastic, recycle as much as possible and only buy things you need. Other tips include:

- Use reusable green bags, keep cups and water bottles
- Join the nude food movement
- Use reusable cloth nappies
- Buy second-hand
- Say no to junk mail
- Avoid items with lots of packaging
- Take the Buy Nothing New challenge
- Use a worm farm or compost bin
- Participate in regular local litter clean ups



A - Z Guide To Waste & Recycling

Each item has a symbol or number next to it, use this as a guide of where to dispose of it appropriately in Wyndham.



Garbage



Recycling



Green Waste



Compost Bin



Hard & Green Waste



Transfer Station

1. Detox your Home
2. Take to a charity Store
3. Coles & Woolworths REDcycle Collection Bin
4. Community Recycling Stations
5. Brotherhood Fridges Free Collection 1300 366 283
6. Freecycle www.freecycle.org or Ziilch, <http://au.ziilch.com/>
7. Wyndham Civic Centre Sharps Collection, 45 Princes Hwy, Werribee.
8. Terracycle www.terracycle.com.au or 1800 983 324

Advertising material

Aerosol cans, spray cans (empty)

Aluminium cans, trays and foil

Appliances or (free)

Baths or (\$)

Batteries (household) or (free)

BBQs or

Beauty Containers or

Biscuit trays (plastic)

Blankets or

Books or

Bottle tops

Branches or

Bread bags or

Bricks, cement, rubble (\$)

Building materials (\$)

Cake Trays

Cans (steel, aluminium)

Car Batteries (free)

Car parts (small) or (\$)

Car Tyres (\$)

Cardboard or (free)

Carpet (\$)

Cartons (milk, etc.)

Ceramics , or (\$)

Cereal & Biscuit boxes

Chemicals

Chip packets or

Cigarette butts

Cleaning bottles (empty)

Cleaning products (ammonia based)

Cling Wrap or

Clothing or

Coat hangers (plastic)

Coffee Cup (paper, plastic)

Coffee grounds , or

Coffee Pods or

Computers & Accessories or (free)

Concrete (\$)

Cooking Oil containers

Cooking Oils

Crockery (broken)

Crockery

Deodorant cans & roll ons (empty)

Detergents, drain cleaners

Dog poo

DVDs, CDs

Egg Cartons or

Electrical Appliances or (free)

Envelopes

EWaste or (free)

Fertilisers

Fire Extinguishers or (\$)

Foam meat trays

Foil lined trays

Food scraps or (no meat)

Fridges, freezers , or (\$)

Fruit & Vegetable Scraps or

Fuels (flammable)

Furniture , , or (\$)

Garden Hose

Garden, grass, green waste , or (\$)

Gas Cylinders (\$)

Glass (broken - wrap in newspaper)

Glass bottles, jars (brown, green or clear, with lids) or (free)

Green waste , or (\$)

Greeting cards

Hot Water Systems or (\$)

Ice cream containers

Insect spray bottles (empty)

Jars

Leaves , or (\$)

Lightglobes or (free)

Magazines

Mattresses or (\$)

Medicine bottles

Mirrors or

Mobile Phones or (free)

Motor Oil (free) up to 15L

Nappies

Newspaper

Paint strippers, thinners, turps

Paint Tins empty or full (free)

Paper

Paper Towel or

Pet food cans

Pizza boxes

Plant pots (plastic)

Plastic bags or

Plastic containers (hard)

Plastic Crockery

Plastic Toys (no batteries) or

Polystyrene (\$)

Polystyrene food trays

Pots & Pans (metal, no glass lids) or

Printer Cartridges (printer, toner)

Printers or (free)

Punnets (plastic)

Pyrex or

Rubber

Scrap Metal or (\$)

Shampoo, conditioner bottles

Smoke Alarms

Soil, dirt (\$)

Sports goods or

Syringes

Takeaway containers (plastic, cardboard)

Tea bags or

Timber or (\$)

Tin cans

Tissues

Toothpaste tubes, toothbrushes or

Toys or

Tupperware (plastic)

TVs or (free)

Tyres (including tubes) (\$)

Vegetable & Fruit Scraps or

Washing powder boxes

Weeds , or (\$)

White Goods or (\$)

Wrappers or

Wrapping Paper

X Ray Film (free)

Yogurt Containers



GREEN LIVING

Stay in Touch

Facebook: Green Living in Wyndham
Enewsletter: Green Living in Wyndham
Website: www.wyndham.vic.gov.au
Email: mail@wyndham.vic.gov.au
Phone: 9742 0777



Call 131 450
for Translating and Interpreting Services

This is printed on 100% post consumer recycled paper and using chlorine free ink.